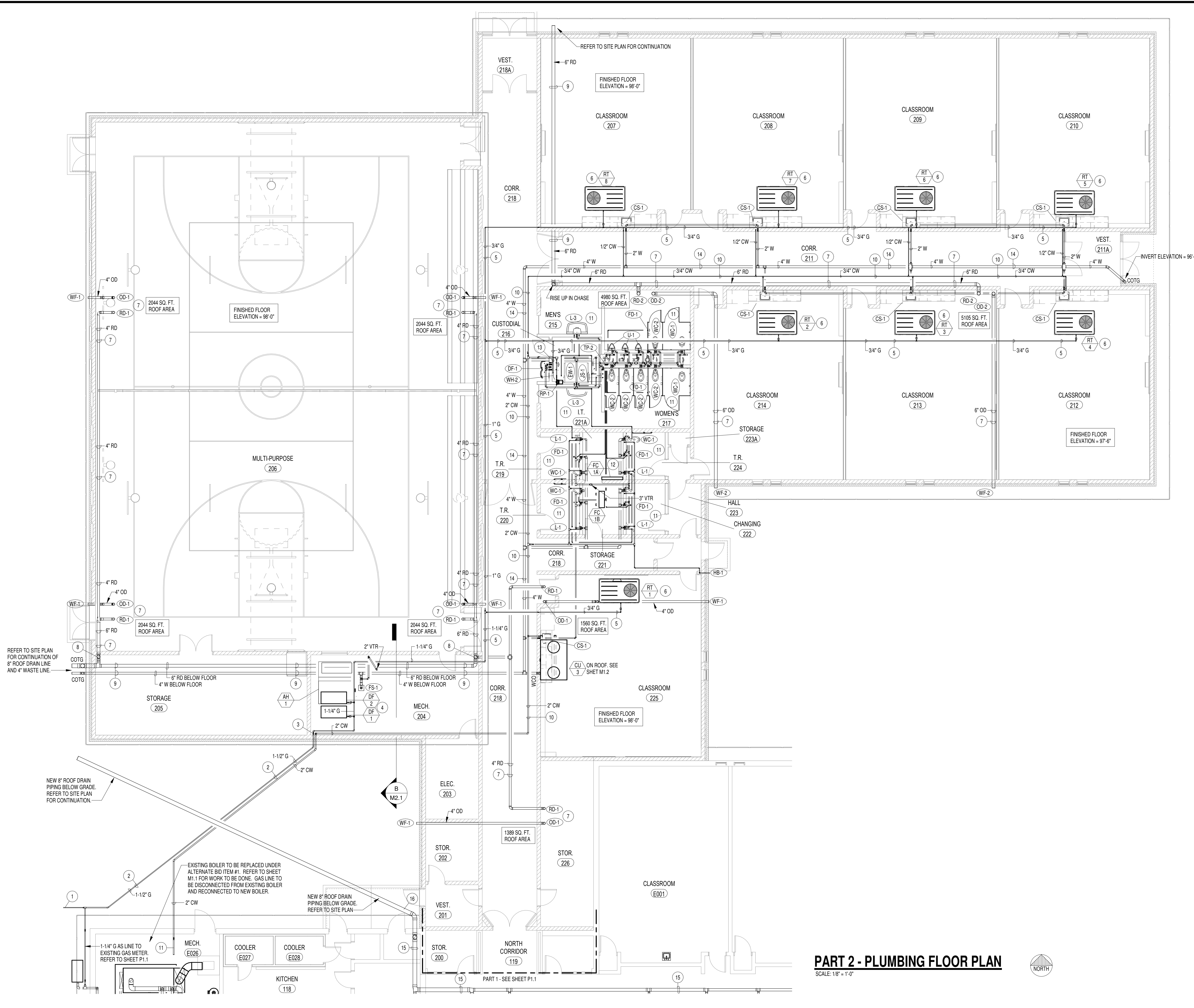
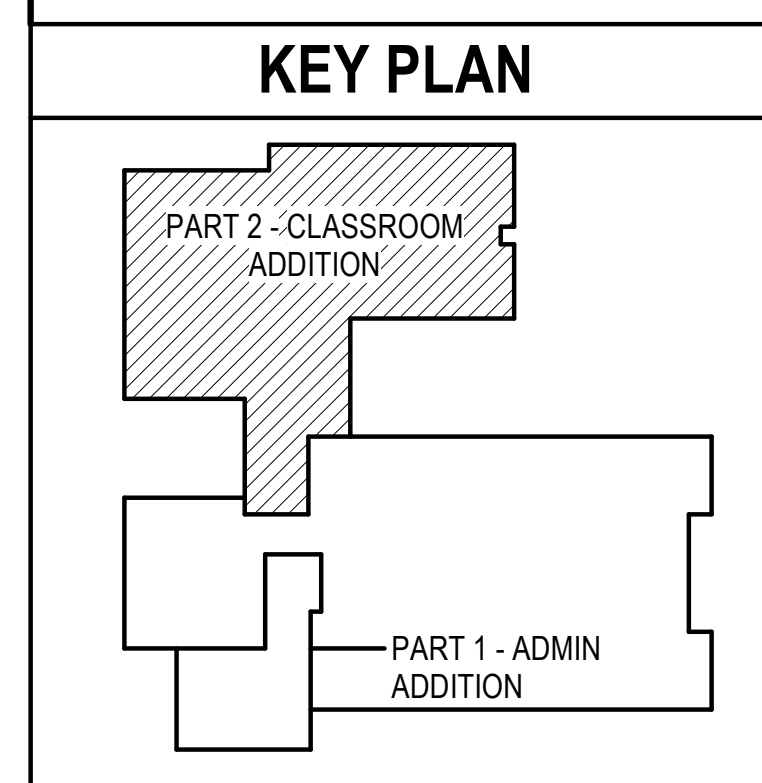


4/12/2019 9:04:15 AM 18072-Harwood Elem M&P -detached.txt



- PLAN NOTES:**
- 3/4" (HIGH PRESSURE) GAS LINE BELOW GRADE TO EQUIPMENT ASSOCIATED WITH PART 1 OF PROJECT. REFER TO SHEET P1.1 FOR CONTINUATION.
 - RUN NEW 1-1/2" (HIGH PRESSURE) GAS LINE BELOW GRADE TO NEW ADDITION AS SHOWN. COORDINATE ACTUAL ROUTING OF PIPING WITH BUILDING FOUNDATION WALLS AND FOOTINGS. NEW 2" WATER PIPING, NEW 6" ROOF DRAIN PIPING AND NEW ASPHALT GROUND COVER BEING INSTALLED.
 - RISE 1-1/2" GAS LINE AND 2" COLD WATER LINES UP IN CORNER OF MECHANICAL ROOM. COORDINATE WITH BUILDING FOUNDATION WALLS AND FOOTINGS.
 - CONNECT 3/4" GAS LINE TO DUCT FURNACE WITH PRESSURE REGULATOR, SHUT-OFF VALVE, AND FLEXIBLE HOSE. REFER TO DETAIL OP3.1 FOR TYPICAL GAS LINE CONNECTION.
 - RUN GAS LINE ON ROOF WITH PYRAMID TYPE SUPPORTS. REFER TO DETAIL OMS.1 FOR TYPICAL SUPPORT INSTALLATION. SUPPORTS TO BE SPACE AT MAXIMUM 6'-0" O.C.
 - ROOF TOP EQUIPMENT PROVIDED AND INSTALLED BY MECHANICAL CONTRACTOR. PLUMBING CONTRACTOR TO ROUGH-IN AND CONNECT 3/4" GAS LINE WITH PRESSURE REGULATOR, SHUT-OFF VALVE AND FLEXIBLE HOSE. REFER TO DETAIL LP3.1 FOR TYPICAL GAS LINE CONNECTION TO OUTDOOR EQUIPMENT.
 - TYPICAL ROOF DRAIN AND OVER FLOW DRAIN. RUN PIPING IN CEILING SPACE AND GRADE AT 1/8" SLOPE PER FOOT. PROVIDE WALL FANGE FOR ALL OVERFLOW PIPE PENETRATIONS THRU EXTERIOR WALLS WHERE SHOWN ON PLANS. MOUNT FLANGES AS HIGH AS POSSIBLE.
 - DROP ROOF DRAIN LINE DOWN IN CORNER OF ROOM TO BELOW FLOOR. COORDINATE LINE WITH BUILDING FOUNDATION AND FOOTINGS. SUPPORT PIPING WITH WALL MOUNTED PIPE SUPPORTS AT 10'-0" MAXIMUM SPACING.
 - RUN ROOF DRAIN PIPING BELOW FLOOR. COORDINATE WITH BUILDING FOUNDATIONS AND FOOTINGS. GRADE PIPING AT 1/8" SLOPE PER FOOT.
 - RUN NEW WATER PIPING IN CEILING SPACE. COORDINATE ACTUAL ROUTING OF PIPING WITH DUCTWORK, BUILDING STRUCTURE AND ELECTRICAL CONDUITS.
 - PROVIDE AND INSTALL NEW PLUMBING FIXTURES AS SPECIFIED. REFER TO LARGE SCALE PLAN ON SHEET P2.1 FOR COMPLETE PIPING SIZES AND CONNECTIONS.
 - MINI SPLIT SYSTEM FURNISHED AND INSTALL BE MECHANICAL CONTRACTOR. DO NOT RUN ANY PIPING ABOVE IT ROOM.
 - PROVIDE AND INSTALL NEW GAS FIRED WATER HEATER COMPLETE WITH THERMAL EXPANSION TANK, MIXING VALVE FOR HOT WATER LINE, HEAT TRAP NIPPLE AND (2) VENTS THRU ROOF. REFER TO DETAIL NP3.1 FOR TYPICAL PIPING CONNECTIONS.
 - RUN ALL WASTE PIPING BELOW FLOOR. GRADE AT 1/4" SLOPE PER FOOT. COORDINATE PIPING WITH FOOTINGS AND FOUNDATION WALLS.
 - EXISTING ROOF DRAIN AND ROOF DRAIN PIPING IN CEILING SPACE TO REMAIN. CONTRACTOR TO FIELD VERIFY EXACT SIZES AND LOCATIONS. PROTECT DURING CONSTRUCTION.
 - DISCONNECT EXISTING 8" ROOF DRAIN LINE AS IT EXITS THE BUILDING. ALL EXISTING DOWNSTREAM PIPING TO BE REMOVED. REFER TO SHEET P0.1. CONNECT NEW 8" LINE TO EXISTING AND RUN TO WEST SIDE OF NEW PART 2 ADDITION. REFER TO SITE PLAN FOR CONTINUATION.



- GENERAL NOTES:**
- THE CONTRACTOR SHALL CHECK AND VERIFY ALL DIMENSIONS AND CONNECTIONS ON THE JOB SITE. ALL WORK SHALL BE EXECUTED FROM MEASUREMENTS TAKEN AT THE SITE.
 - THE MECHANICAL CONTRACTOR SHALL BE RESPONSIBLE TO INSURE PROPER CODE CLEARANCES FOR ELECTRICAL AND MECHANICAL ACCESS WHEN INSTALLING ANY EQUIPMENT SUPPLIED BY THE MECHANICAL CONTRACTOR.
 - IT IS CRITICAL THAT THIS CONTRACTOR COORDINATE EQUIPMENT LOCATIONS WITH PIPING, DUCTWORK, ELECTRICAL CONDUIT AND BUILDING STRUCTURE TO INSURE CODE COMPLIANCE.
 - CEILING DIFFUSERS ARE SHOWN IN APPROXIMATE LOCATIONS. REFER TO LIGHTING PLANS AND REFLECTED CEILING PLAN FOR EXACT LOCATIONS.
 - DUCT DIMENSIONS CALLED OUT ON DRAWINGS ARE INSIDE FREE AREA DIMENSIONS. ACOUSTICAL DUCT LINER ARE TO BE ADDED TO OVERALL MEASUREMENTS.
 - ALL DUCTWORK AND PIPING WHICH PASSES THRU FIRE RATED WALLS TO BE FIRE STOPPED WITH APPROVED FOAM OR SEALANT. REFER TO SPECIFICATIONS FOR APPROVED MANUFACTURES.

ORIGINAL DRAWING SIGNED BY: DWAYNE C. SUDWEEKS
 DATE ORIGINAL SIGNED: April 12, 2018 ORIGINAL ON FILE AT:
 ENGINEERED SYSTEMS ASSOCIATES 1355 EAST CENTER,
 POCATELLO, IDAHO 83201

Engineered Systems Associates
 1355 EAST CENTER
 POCATELLO, IDAHO 83201
 PHONE: (208) 233-0501
 FAX: (208) 233-0529
 EMAIL: esa@engsystems.com
 ESA JOB NUMBER: 18072

Professional Engineer
 Dwayne C. Sudweeks
 5762
 4/12/19
 STATE OF IDAHO

PART 2 - PLUMBING FLOOR PLAN

SCALE: 1/8" = 1'-0"

nbw architects.p.a.
 ARCHITECTURE / PLANNING / INTERIORS
 SCOTT L NELSON A.I.A. KEVIN R BODILY A.I.A. JAMES H WYATT A.I.A.
 980 JOHN RIBBING PARKWAY P.O. BOX 2212 - IDAHO FALLS, IDAHO 83402-2212
 (208) 208-5228 (208) 208-5228 (208) 208-5228

ADDITION & REMODEL FOR:
HARWOOD ELEMENTARY
 JEFFERSON JOINT SCHOOL DISTRICT NO. 251
 200 W 3RD N, RIGBY, IDAHO 83442

PROJECT:

REVISIONS

NO.	DESCRIPTION

PROJECT NO.
16070
DATE:
APRIL 2019
DRAWN BY:
M JENSEN
CHECKED BY:
D SUDWEEKS

DRAWING NO.:

P1.2